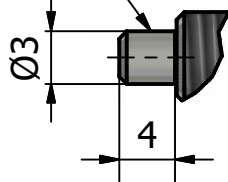


Tenue mécanique  $\geq 500\text{N}$  garantie

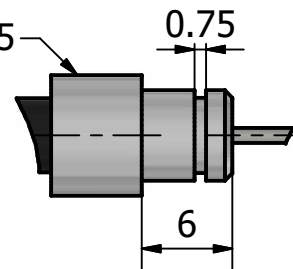
A ( 2 : 1 )

Embout cylindrique NI000183



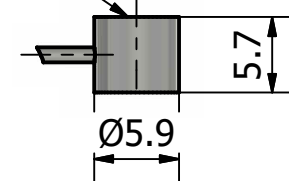
B ( 2 : 1 )

Butée à gorge SA000235



C ( 2 : 1 )

Embout tambour NI000320



Ecrous MU000032

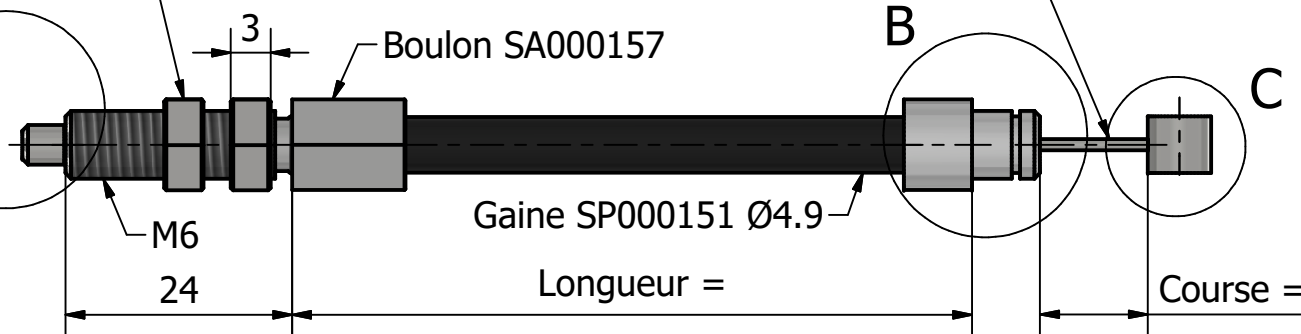
Câble Ø1 6X7-WSC AISI 316 SE000011

Boulon SA000157

A

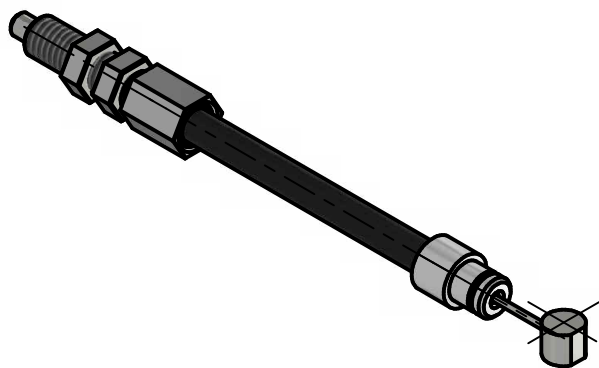
B


C



Dimensions en mm

Tolérance générale sur les longueurs  $\pm 1.5\text{mm}$  par mètre



Indice		Modifications			Date	Nom
Matière	TTH	TS	Tolérances générales $\pm 0.2$	Etat de surface	Date 20/08/2020	Dessiné par eric.willm
 <b>Codica</b> câbles transmissions				Câble type S sur mesure, câble Ø1		
				Plan type S		Indice